

A new subfamilial and tribal classification of Restionaceae (Poales)

Barbara G. Briggs¹ and H. Peter Linder²

¹*Botanic Gardens Trust Sydney, Mrs Macquaries Road, Sydney NSW 2000, Australia.*

Email: barbara.briggs@rbgsyd.nsw.gov.au

²*Institute of Systematic Botany, University of Zurich, Zollikernstrasse 107, CH-8008 Zurich, Switzerland*

Email: plinder@systbot.unizh.ch

Abstract

Restionoideae Link, with the newly described Sporadanthoideae and Leptocarpoideae, represent major clades of Restionaceae distinguished by analyses of chloroplast DNA data. These subfamilies are supported by features of morphology, culm anatomy, pollen and phytochemistry. Sporadanthoideae occur in Australia and New Zealand, Leptocarpoideae principally in Australia but with representatives also in New Zealand, New Guinea, Aru Islands, Malesia, Hainan Island and Chile, while Restionoideae are in sub-Saharan Africa and Madagascar. Two tribes, Restioneae Bartl. and Willdenowiae Mast. are recognised within Restionoideae, but their circumscriptions are very different from those of the tribes previously recognised within African Restionaceae. The relationship of Centrolepidaceae to Restionaceae remains unresolved, as sister group or embedded within the latter, but there is some support for Centrolepidaceae embedded within Australian Restionaceae and sister to Leptocarpoideae. This highly distinctive clade may be recognised as subfamily Centrolepidoideae Burnett if included within Restionaceae. Tribe Haplantherae Benth. & Hook. f. has the same circumscription as Restionaceae, as currently recognised, and *Restio* Rottb. is designated as the lectotype of this tribal name.

Introduction

Restionaceae have been the subject of much detailed morphological, anatomical and evolutionary study but lack a classification of major infrafamilial groups that is consistent with current phylogenetic inferences. Relevant data have come from morphological studies (Linder 1984, 1985; Meney & Pate 1999; Linder et al. 2000), including anatomical (especially Cutler 1969) and palynological investigations (Chanda 1966, Chanda & Ferguson 1978, Linder & Ferguson 1985). Flavonoid constituents were investigated by Harborne (1979), Harborne et al. (2000) and Williams et al. (1998). Clearer indications of relationships have recently come from DNA-based phylogenetic investigations (Briggs et al. 2000; Linder et al. 2003, 2005; Hardy & Linder 2005, 2007; Linder & Hardy 2005; Moline & Linder 2005; Hardy et al. 2008; Briggs et al. submitted) which also confirmed that Centrolepidaceae was either closely related to Restionaceae or embedded within it.

The phylogenetic hypotheses that are a basis for the suprageneric taxa recognised here are largely inferred from analyses of chloroplast DNA data which have proved more phylogenetically informative than study of the highly reduced vegetative structures and small wind-pollinated flowers. Indeed, homoplasious reduction in floral and vegetative structures has led morphological comparison often to produce erroneous conclusions. For example, the multiple losses of the distinctive and prominent culm anatomical feature of pillar cells in Australian Restionaceae only became apparent when a molecular phylogeny was developed (Briggs et al. 2000). More comprehensive morphological study, combined with DNA data has, however, added resolution to the phylogeny of the African members (Hardy et al. 2008).

When Restionaceae (as Restiaceae) was originally described by Robert Brown (1810) it was much more inclusive than the family now recognised. Diverse genera have been transferred to Anarthriaceae, Centrolepidaceae, Ecdeiocoleaceae, Eriocaulaceae or Xyridaceae. The separation of Anarthriaceae and Ecdeiocoleaceae was initially largely based on differences in their vegetative anatomy (Cutler & Airy Shaw 1965). DNA-based phylogenies (Briggs et al. 2000, Bremer 2002, Chase et al. 2006 and other studies in Columbus et al. 2006, Marchant & Briggs 2007, Briggs et al. in press) show Ecdeiocoleaceae to be more closely allied to Poaceae than to Restionaceae, whereas most DNA data show Anarthriaceae as sister to (Restionaceae plus Centrolepidaceae). While molecular data (Briggs et al. 2000) showed that *Lyginia* and *Hopkinsia* formed a clade with *Anarthria*, the recognition of the separate families Lyginiaceae and Hopkinsiaceae (Briggs & Johnson 2000) was based on the very divergent culm anatomy. However, an enlarged Anarthriaceae, including the three genera, is now generally accepted.

Centrolepidaceae Endl. (1836) or Centrolepidoideae Burnett (1835)

Centrolepidaceae have long been considered to be closely related to Restionaceae or a derivative of it (Dahlgren et al. 1985, Linder & Rudall 1993, Kellogg & Linder 1995, Linder et al. 2000) and together they form a robustly supported monophyletic group in chloroplast DNA studies of Poales (Briggs et al. 2000, Bremer 2002, Briggs et al. in press). Similarities in embryology have been especially noted (Hamann 1962, 1975, Prakash 1969, Rudall and Linder 1988, Linder & Rudall 1993), as well as the similarity of Centrolepidaceae plants to Restionaceae seedlings (Linder & Caddick 2001). Restionaceae, as in many other Poales, show a relatively fast rate of nucleotide substitution and long branches in molecular phylograms, but Centrolepidaceae have exceptionally long branches. Although the currently available plastid DNA sequence data (Briggs et al. in press) suggest that Centrolepidaceae is embedded in Restionaceae, as sister to Leptocarpoideae, the alternative arrangement as sister to Restionaceae cannot yet be convincingly rejected (Fig. 1).

If a position embedded within Restionaceae is accepted, this clade would be known as subfamily Centrolepidoideae Burnett (1835, page 416), see also Reveal (2007). Centrolepidoideae differ conspicuously from other Restionaceae in their diminutive size, sometimes annual habit, unreduced leaves, lack of perianth, and in the floral structures which have been regarded as pseudanthia of male flowers reduced to a single stamen and female flowers to a single carpel (Hamann 1962, 1975; Cooke 1998) but could also be highly modified flowers (Sokoloff et al. submitted). The pollen of Australian Restionaceae have been described as 'centrolepidoid' (Chanda 1966, Chanda & Rowley 1967, Ladd 1977, Chanda & Ferguson 1979, Johnson & Briggs 1981) but Linder and Ferguson (1985) drew attention to important features of Centrolepidaceae

pollen such as the granular rather than columellate interstitium, lack of endexine and differences in the aperture and scrobiculi. *Centrolepis* (c. 26 spp., Cooke 1998), *Gaimardia* (4 spp.) and *Aphelia* (6 spp.) occur in southern temperate regions and mountains of the tropics: in Australia, south-east Asia, Pacific Islands and southern South America.

Major clades of Restionaceae

In addition to Centrolepidoideae, if included in Restionaceae, three major clades are now distinguished and here recognised as subfamilies: Sporadanthoideae and Leptocarpoideae are here newly described, along with Restionoideae (subdivided into two tribes, Restioneae and Willdenowieae). Relationships among the subfamilies are still not robustly resolved (Briggs et al. in press) but there is support for a clade of (Sporadanthoideae + Leptocarpoideae + Centrolepidoideae), with these either forming a trichotomy or grouped as (Sporadanthoideae (Leptocarpoideae + Centrolepidoideae)) (Fig. 1a). Thus the primarily Australian clade forms a sister group to the African Restionoideae. This topology is not supported by parsimony analyses of *trnK* and *trnL-F* data (Fig. 1b), but evidence from slowly evolving genes and from Bayesian or maximum likelihood analyses are considered more reliable in investigating ancient relationships (Jiang et al. 2008) than parsimony results from fast-evolving genes. The latter are more subject to artifacts arising from long-branch attraction.

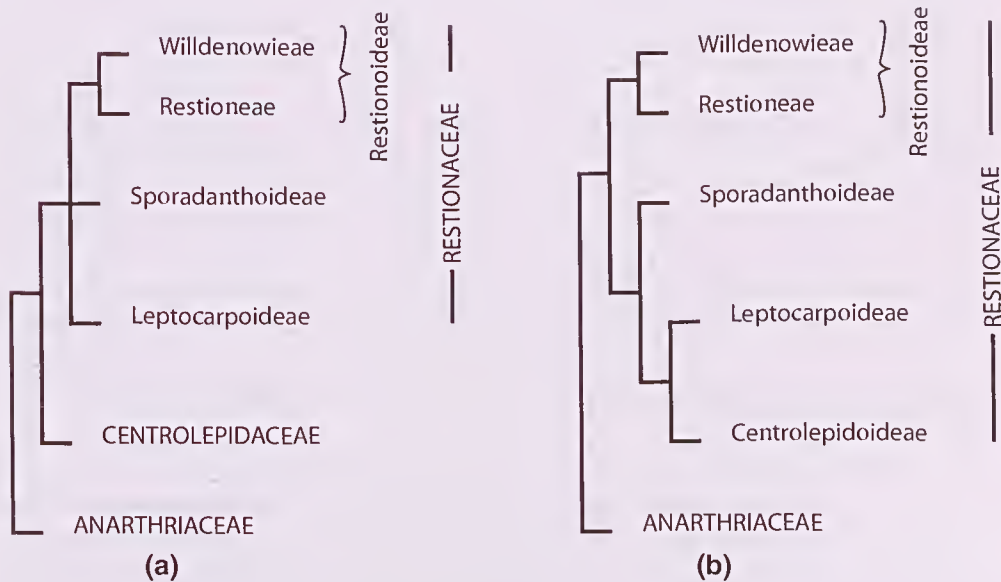


Fig. 1. Alternative positions of the centrolepid clade: (a) sister to Restionaceae (family Centrolepidaceae), as found from parsimony analysis of *trnK* or *trnL-F*; (b) embedded in Restionaceae (subfamily Centrolepidoideae) and sister to Leptocarpoideae, as found from *rbcL* data or from Bayesian analysis of *trnK* or *trnL-F* (Briggs et al. in press).

Previous subfamily and tribal nomenclature and classifications

The earliest valid use of names at subfamily and tribal rank based on *Restio* (Reveal 2007) are Restionoideae Link, Handbuch 1: 134. Jan-Aug 1829, and at tribal rank Restioneae Bartl., Ord. Nat. Pl.: 36. Sep 1830. These names are adopted here, as is Willdenowieae (Willdenovieae) Masters in A. DC., Monogr. Phan. 1: 314. Jun 1878. The circumscription of these taxa is, however, very different from when these names were first applied. In Bartling's treatment, Restioneae equates to the whole of Restionaceae (excluding Centrolepidaceae) as here recognised (examples from all major clades being included), whereas the two other subfamilies consisted of genera now placed in Centrolepidaceae, Anarthriaceae and Eriocaulaceae.

Haplantherae and Diplantherae. Bentham and Hooker (1883) divided Restionaceae, as then circumscribed, into two tribes: Haplantherae with one anther loculus and Diplantherae with two anther loculi. This classification was also used by Gilg-Benedict (1930) and these tribes were subsequently referred to as Restioneae and Anarthriaceae (Hamann 1964). The latter tribe consisted of *Ecdeiocolea* F. Muell., *Anarthria* R.Br. and *Lyginia* R.Br. Subsequently *Ecdeiocolea* and *Anarthria* were excluded from Restionaceae with the description of Ecdeiocoleaceae and Anarthriaceae by Cutler and Shaw (1965). As mentioned above (Briggs et al. 2000), DNA data later showed that *Ecdeiocolea* is more closely allied to Poaceae than to Restionaceae and that *Lyginia*, *Hopkinsia* and *Anarthria* form a clade that is sister to (Restionaceae + Centrolepidaceae). So all members of Diplantherae are now excluded from Restionaceae.

Since Haplantherae has a circumscription equivalent to that of family Restionaceae, as the latter is now recognised, it is appropriate that it be typified by the same type. We therefore designate a lectotype.

Restionaceae tribe Haplantherae Benth. & Hook.f., *Genera Plantarum* vol. 3: 1028. Lectotype (here designated) *Restio* Rottb.

Restioideae and Willdenowieae. Masters (1878) recognised two tribes, Restioideae, with two or three (or one by abortion) ovary loculi and capsular fruit, and Willdenowieae (originally Willdenovieae) with a one-locular ovary and a nut fruit. These tribes formalised a grouping of genera largely based on the same criteria as that presented (without formal naming of groups) by Lindley (1836, p. 386), but which Lindley attributed to Nees von Esenbeck. Nees made important contributions to knowledge of Restionaceae (especially Nees 1830, 1846). The character of number of ovary loculi does not provide a satisfactory classification since there has been homoplasious reduction in carpel number in many groups within the clades now distinguished (Linder 1992a,b; Ronse Decraene et al. 2002).

When originally described, both of the tribes recognised by Masters included Australasian members as well as African ones. Indeed, it was only following the work of Gilg-Benedict (1930), Cutler (1969, 1972) and Linder (1984, 1985) that the names *Mastersiella* Gilg-Benedict and *Calopsis* Beauv. ex Desv. were adopted for African members, in contrast to the Australian *Hypolaena* R.Br. and *Leptocarpus* (Labill.) R.Br. More recently, the Australian taxa formerly included in *Restio* were separated from the African genus *Restio* (Briggs & Johnson 1998a, b), so that each of the genera now recognized can be assigned to the African clade or to one of the largely Australasian clades and subfamilies. This fulfils the prediction of Cutler (1972) that, when revised, no genus would be common to Australia and Africa. Our circumscription of tribes

also shows no agreement with the classification of the African members by Pillans (1928), who included in Restionoideae only *Restio* and *Choudropetalum* (the latter now included in *Elegia*), placing all other genera in Willdenowiaeae.

Characters distinguishing subfamilies and tribes

Morphology. As a result of highly reduced structures and numerous homoplasious changes, neither external vegetative nor floral morphology offer features that we find useful in characterising the subfamilies, apart from Centrolepidoideae. Features are mostly not unique to a subfamily or are absent from some members of the subfamily, often by loss of the feature. For example, spikelet structure is widely found but in Sporadanthoideae the inflorescence is not always organised into spikelets: *Lepyrodia* and *Sporadanthus* lack spikelet structure, possibly having lost this feature, whereas *Calorophus* shows spikelet structure in both male and female inflorescences. However, lack of spikelet structure is not unique to Sporadanthoideae since, in Restionoideae, *Elegia* and males of *Willdenowia* do not have flowers aggregated into distinct spikelets.

Tribe Willdenowiaeae differs from Restioneae in that the pericarp is usually heavily lignified and the floral pedicel sometimes becomes thickened and functions as an elaiosome, and the gynoecium has two styles. Ronse Decraene et al. (2001) found a concordant pattern of loss of the anterior carpel and displacement of the remaining carpels throughout Willdenowiaeae, indicating that these aspects of floral development were synapomorphic. Linder (1992b) also found a single pattern of carpel development in the tribe, as well as a single origin of the hard, woody nutlet.

Pollen morphology. Pollen grains of the Sporadanthoideae and Leptocarpoideae are both of the type termed Australian restionoid (as 'Australian restioid') (Linder & Ferguson 1985), whereas the Restionoideae have African restionoid pollen. Thus pollen of the two Australasian subfamilies does not show the tectum raised around the large and usually irregular aperture, so that there is no distinct annulus; also there is no thickened foot layer. In the Restionoideae the tectum is raised around the relatively small aperture and some members have a thickened foot layer (Linder 1984, Linder et al. 1998).

Embryology. Proliferating antipodals were reported in Restioneae but were absent from those Sporadanthoideae and Leptocarpoideae studied (Rudall & Linder 1988). However, only a minority of genera have been sampled and there are no reports for Willdenowiaeae.

Culm anatomy. Differences in culm anatomy between African and Australasian members have long been recognised (Cutler 1969, Johnson & Briggs 1981, Linder 2000). Anatomical features are also reported for African members by Linder (1984) and Australian genera by Pate and Delfs (1999) and Meney et al. (1999).

Most of the following terms used for the distinctive anatomical cell types or structures were defined by Cutler (1969) who clearly recognised their taxonomic significance and pointed out differences between those Australian and African taxa that were at that time considered to be congeneric.

Protective cells: modified cells of the chlorenchyma with slightly to moderately thickened lignified walls surrounding a substomatal cavity forming a tube extending all or part way through the chlorenchyma. These occur in Restionoideae and Sporadanthoideae,

being absent from Leptocarpoideae. Analogous protection of the substomatal cavity in members of the *Desmocladus* group and *Alexgeorgea* within Leptocarpoideae is by elongated and thick-walled epidermal cells. Using a broader definition of protective cells, Linder (2000) regarded epidermally-derived protective cells and chlorenchyma-derived protective cells as an example of convergence.

Pillar cells: elongate, palisade-like cells of the parenchyma sheath, usually with moderately thickened (lignified) walls, radiating from the sclerenchyma sheath to the epidermis, dividing the chlorenchyma into longitudinal bands. Since they arise from the parenchyma sheath, pillar cells are not homologous with 'false pillar cells'. Pillar cells are restricted to Leptocarpoideae, and are present in *Eurychorda*, sister group to the rest of that subfamily, as well as in ten other leptocarpoid genera. However, there appear to have been homoplasious losses of this feature in at least four leptocarpoid clades (Briggs et al. 2000).

'False pillar cells' (Linder 1984, 2000) are lignified cells of the chlorenchyma that extend outwards from ridges of the sclerenchyma in some species. These are unique to the Willdenowieae, but are found only in a small minority of the species and genera.

Girders: sclerenchyma ridges opposite the outer vascular bundles, extending from the sclerenchyma sheath all or part-way through the chlorenchyma. These occur in Leptocarpoideae, although in only a few genera; they were designated as 'ribs opposite vascular bundles' by Linder (2000).

Ribs: sclerenchyma ridges alternating with the outer vascular bundles, extending from the sclerenchyma sheath all or part-way through the chlorenchyma (Cutler 1969, p. 327). They are a feature of most Willdenowieae.

Silica bodies: sphaeroidal-nodular bodies or granular sand may be present, especially in the parenchyma sheath (between the chlorenchyma and the sclerenchyma cylinder) or in the outer layer of the sclerenchyma. Silica bodies are absent from Anarthriaceae (Cutler 1969, Prychid et al. 2004). Such inclusions are widespread in the commelinid families, so presumably their loss is a synapomorphy of that family. Within Restionaceae, silica bodies are found in members of all subfamilies and tribes but are reported as absent from some genera, especially in the Restioneae (*Elegia*, *Staberolia*, *Rhodocoma*).

Phytochemistry. The subfamilies show significant differences in the flavonoid constituents of their culms (Harborne 1979, Williams et al. 1998, Harborne 2000, Harborne et al. 2000). Myricetin is reported only in Sporadanthoideae (present in *Lepyrodia* and *Sporadanthus*, although absent from *Calorophus*). Leptocarpoideae are characterised by flavones, commonly luteolin and hypolaetin, as well as sulphated flavonoid derivatives. Restionoideae show flavonols, commonly derivatives of myricetin and its methyl ethers larycitrin and syringetin, and also proanthocyanidins.

Description of subfamilies of Restionaceae

Sporadanthoideae B.G.Briggs & H.P.Linder, subfam. nov.

A Restionoideis et Leptocarpoideis combinatione characterum sequentium distinguenda: chlorenchyma continua, cellulis columnaribus nullis; parietes cellularum cavitates substomatales cingentes incrassati; flores in spiculis aggregati vel singulatim in inflorescentia portati; apertura pollinis ampla, irregularis, stratum fundum crassum deficiens.

Type genus: *Sporadanthus* F.Muell. Type: *Sporadanthus traversii* (F.Muell.) F.Muell. ex Kirk.

Flowers aggregated or not aggregated into spikelets; pollen with the tectum not raised around the large (8–25 µm) and usually irregular aperture and lacking a thickened foot layer (Australian restionoid type); proliferating antipodal cells in embryo sac lacking (so far as known); protective cells lining substomatal cavities present; chlorenchyma not interrupted by pillar cells or ‘false pillar cells’ or sclerenchyma girders or ribs; silica bodies or granular silica often present in epidermis and sometimes in ground tissue and parenchyma sheath; the flavonols myricetin and quercetin often present, flavones and protoanthocyanidins mostly absent.

A subfamily of three genera and about 31 species (including some not formally named), occurring in Australia and New Zealand. Sporadanthoideae equates with the *Lepyrodia* group of Briggs and Johnson (1999) and Briggs et al. (2000), but with the combined *Lepyrodia* and *Calorophus* groups of Johnson and Briggs (1981). The three genera recognized in the Sporadanthoideae, *Lepyrodia* R.Br. (species: 13 described, about 9 undescribed), *Sporadanthus* F.Muell. (7 described, 1 undescribed), and *Calorophus* Labill. (2 spp.), did not form a monophyletic group in a morphological cladistic study (Linder et al. 2000) but the clade is supported in most DNA analyses (Marchant & Briggs unpublished data).

Leptocarpoideae B.G.Briggs & H.P.Linder, **subfam. nov.**

A Restionoideis et Sporadanthoideis combinatione characterum sequentium distinguenda: chlorenchyma continua vel cellulis columnaribus vel costis sclerenchymatis interrupta; parietes cellularum cavitates substomatales cingentes non incrassati; flores in spiculis aggregati; apertura pollinis ampla, irregularis, stratum fundum crassum deficientis.

Type: *Leptocarpus* R.Br. (nom. cons.). Type (type. cons.): *L. teuax* (Labill.) R.Br.¹

Flowers in spikelets; pollen lacking a thickened foot layer and the tectum not raised around the large (8–25 µm) and usually irregular aperture (Australian restionoid type); protective cells absent; pillar cells in the chlorenchyma present or absent; sclerenchyma girders mostly absent but when present opposite vascular bundles; ‘false pillar cells’ and sclerenchyma ribs absent; silica bodies often present in parenchyma sheath and epidermis; flavones luteolin and hypolaetin often present, flavonols and protoanthocyanidins mostly absent.

A subfamily with 28 genera currently recognised and about 117 species (including some not formally named), occurring in Australia, New Zealand, New Guinea, Aru Islands, Malesia, Hainan Island and Chile. Leptocarpoideae equates to the *Leptocarpus* group of Johnson and Briggs (1981) but to the combined *Winiifredia*, *Desmocladius*, *Loxocarya* and *Leptocarpus* groups of Briggs and Johnson (1998a, 1999), together with

¹ The proposal of this new conserved type (Briggs 2001, 2005) was recommended by the Committee for Spermatophyta (Brummitt 2005: p. 1096), endorsed by the General Committee (Barrie 2006: p. 800) and approved at the XVII International Botanical Congress (McNeill et al. 2005) but unfortunately the listing of the conserved type in the International Code of Botanical Nomenclature (Vienna Code) (McNeill et al. 2006: p. 270) was not changed to incorporate this decision. This oversight should be corrected in the next issue of the Code.

Alexgeorgea which was ungrouped. It also corresponds to the combined *Desmoclads*, *Loxocarya* and *Leptocarpus* clades of Linder et al. (2000) derived from morphological cladistic study.

The Leptocarpoideae are discussed by Briggs and Johnson (1999) and Meney and Pate (1999). The *Desmoclads* and *Leptocarpus* groups based on morphology of Briggs and Johnson (1998a, 1999) and Linder et al. (2000) are supported by DNA data but the *Loxocarya* group is paraphyletic and these groups do not adequately represent the main clades within Leptocarpoideae. Especially, the position of *Eurychorda* as sister-group to the remainder of Leptocarpoideae was not expected from morphological studies. The status of several genera is under review following results from analyses of DNA data.

Genera currently recognised: *Alexgeorgea* (3 species), *Apodasmia* B.G.Briggs & L.A.S.Johnson (3 described, 1 undescribed), *Baloskion* Raf. (8), *Catacolea* B.G.Briggs & L.A.S.Johnson (1), *Chaetanthus* R.Br. (3), *Chordifex* B.G.Briggs & L.A.S.Johnson (within which the previously described genera *Acion*, *Guringalia* and *Saropsis* [Briggs & Johnson 1998a] have been synonymised [Briggs & Johnson 2004]) (20), *Coleocarya* S.T.Blake (1), *Cytogonidium* B.G.Briggs & L.A.S.Johnson (1), *Dapsilanthus* B.G.Briggs & L.A.S.Johnson (4), *Desmoclads* Nees (15), *Dielsia* Gilg (1), *Empodisma* L.A.S.Johnson & D.F.Cutler (2), *Eurychorda* B.G.Briggs & L.A.S.Johnson (1), *Harperia* W.Fitzg. (4), *Hypolaena* R.Br. (8), *Kulinia* B.G.Briggs & L.A.S.Johnson (1), *Lepidobolus* Nees (6 described, 3 or 4 undescribed), *Leptocarpus* R.Br. (2 described, 1 undescribed), *Loxocarya* R.Br. (5), *Meeboldina* Suess. (5 described, 6 undescribed), *Melanostachya* B.G.Briggs & L.A.S.Johnson (1), *Onychosepalum* Steud. (3), *Platychora* B.G.Briggs & L.A.S.Johnson (2), *Stenotalis* B.G.Briggs & L.A.S.Johnson (1), *Taraxis* B.G.Briggs & L.A.S.Johnson (1), *Tremulina* B.G.Briggs & L.A.S.Johnson (2), *Tyrbastes* B.G.Briggs & L.A.S.Johnson (1), *Winifredia* L.A.S.Johnson & B.G.Briggs (1).

Within Leptocarpoideae, pillar cells appear to be a pleisiomorphic character (Briggs et al. 2000), being present in eleven genera including *Eurychorda* which appears in molecular phylogenetic trees as sister to the remainder of the subfamily. The loss of pillar cells is, however, a homoplasy shown in the *Desmoclads* group (absent throughout), *Winifredia* group (pillars present in *Taraxis*; absent in *Empodisma* and *Winifredia*) and *Loxocarya* group (present in *Alexgeorgea*, western Australian *Chordifex*, *Dielsia*, *Eurychorda* and *Loxocarya*; absent in *Baloskion*, eastern Australian *Chordifex* (Briggs & Johnson 2004), *Cytogonidium*, *Dielsia*, *Melanostachya*, *Tremulina*, *Platychora* and *Tyrbastes*). They are present throughout the *Leptocarpus* group.

Restionoideae Bartl.

Type: *Restio* Rottb. (nom. cons.) Lectotype: *Restio triticeus* Rottb. (McVaugh 1968).

Flowers mostly in spikelets; pollen with the tectum raised around the relatively small (4–10 µm) aperture and some members with thickened foot layer (African restionoid type); embryo sac often with proliferating antipodals; protective cells present lining substomatal cavities; pillar cells absent; sclerenchyma ribs sometimes present, alternating with outer vascular bundles; 'false pillar cells' sometimes present; silica bodies often present in the parenchyma sheath or the outer layer of the sclerenchyma cylinder; proanthocyanidins mostly present; glycosides of myricetin, larycetin and syringetin sometimes present.

A subfamily of about 350 species, occurring in sub-Saharan Africa and Madagascar, with principal diversity in the Cape Floristic Region of South Africa. Restionoideae

comprises the African clade of Restionaceae, postulated to be a monophyletic group by Johnson and Briggs (1981) on the basis of morphological and anatomical features. Subsequently, morphological (Linder et al. 2000) and DNA studies (Eldenäs & Linder 2000, Linder et al. 2003, Briggs et al. in press) have corroborated its monophyly. Its morphology and members are described and discussed by Linder (1984; 1985; 1991a, b). Genera currently recognised are listed under the tribes.

Description of tribes within Restionoideae

Two tribes are recognised within Restionoideae, corresponding to the major clades apparent in most analyses of DNA data (Linder et al. 2003, Hardy et al. 2008, Briggs et al. in press). That the genera now placed in Willdenowieae formed a clade was also apparent from analyses of morphological data (Linder 1984, 1991b; Linder et al. 2000). Linder (1991b) observed that the *Willdenowia* clade is strongly supported by several unique morphological synapomorphies derived from a wide range of organs. The Restioneae, however, were not recognised as a clade (including *Staberoha* and *Ischyrolepis*) until molecular data were available.

Restioneae Bartl., Ord. Nat. Pl.: 36. Sep 1830.

Restioideae Mast. In A. & C. de Candolle, Monograph Phanerogamarum vol. 1: 218–398. 1878

All carpels fertile or variously reduced, styles 3, 2 or 1; fruits soft-walled nuts or capsules; young seed coat tanniferous; pollen aperture various; sclerenchyma ribs absent; false pillar cells absent; chlorenchyma cells radially elongated; silica bodies often present in the parenchyma sheath but absent from the sclerenchyma.

Linder (1992b) found homoplasy in the patterns of carpel loss in the tribe, in contrast to the single pattern shown in the Willdenowieae. There was also evidence of multiple origins of unignified nutlets in Restioneae. The evolution and ecology of members of the Restioneae have been investigated by Linder and Mann (1988), Linder and Hardy (2005), Hardy and Linder (2005), Linder et al. (2005) and Moline and Linder (2005).

A tribe of about 300 species, including many as yet undescribed species, Restioneae comprises the *Thamnochortus*, *Restio* and *Elegia* clades of Linder (1984). Genera currently recognised in Restioneae: *Askidosperma* Steud. (12), *Calopsis* Beauv. (23), *Elegia* L. (51, within which the previously recognised genera *Chondropetalum* Rottb. and *Dovea* Kunth have been synonymised [Moline & Linder 2005]), *Ischyrolepis* Steud. (c. 48), *Platycaulos* H.P. Linder (c. 8), *Restio* Rottb. (c. 93), *Rhodocoma* Nees (7), *Staberoha* Kunth (c. 9), *Thamnochortus* Berg. (33).

Analyses of chloroplast DNA data and morphology (Eldenäs & Linder 2000, Hardy et al. 2008) show that *Restio* and *Calopsis* are polyphyletic and changes to the generic classification are expected (Linder & Hardy in prep.).

Willdenowieae Masters in A. DC., Monogr. Phan. 1: 314. Jun 1878 (*Willdenovieae*).

Type: *Willdenowia* Thunb. Lectotype: *W. striata* Thunb. (Linder 1984: p. 67)

Mostly with a single functional carpel, and with carpels 2 and 3 fused; styles 2; young seed coat not tanniferous; fruits mostly large woody nuts, often on fleshy pedicels; pollen aperture with foot layer scarcely thickened, border region \pm sharply raised

forming a very regular ring (aperture type 2b of Linder 1984); sclerenchyma ribs alternating with the outer vascular bundles mostly present; false pillar cells present or absent; chlorenchyma cells often radially short and squat; silica bodies usually present in the sclerenchyma.

A tribe of about 50 species, Willdenowieae equates to the *Ceratocaryum*–*Willdenowia* clade of Linder (1984) and many of the taxa are myrmecophilous (Linder 1991a). Genera currently recognised in the Willdenowieae: *Authochortus* Nees (15), *Cannomois* Beauv. ex Desv. (6), *Ceratocaryum* Nees (6), *Hypodiscus* Nees (15), *Hydrophilus* HPLinder (1), *Mastersiella* Gilg-Ben. (13), *Nevillea* Esterh. & H.P.Linder (2), *Willdenowia* Thunb. (12).

Molecular-based phylogenetic work (Eldenäs & Linder 2000, Hardy et al. 2008) suggests that a number of the genera are not monophyletic.

Acknowledgments

We thank Christopher Hardy and Adam Marchant for making available unpublished DNA data, Peter Wilson for helpful discussion of nomenclatural aspects and assistance with the Latin descriptions, Lesley Elkan for the diagram and Paula Rudall for helpful comments on the manuscript.

References

- Barrie FR (2006) Report of the General Committee: 9. *Taxon* 55: 795–800.
- Bentham G & Hooker JD (1883) *Genera Plantarum*, vol. 3. (London: Reeve)
- Bremer K (2002) Gondwanan evolution of the grass alliance of families (Poales). *Evolution* 56: 1374–1387.
- Briggs BG (2001) (1489) Proposal to conserve the name *Leptocarpus* (Restionaceae) with a conserved type. *Taxon*: 50: 919–921.
- Briggs BG (2005) Lectotypification of *Schoenodum tenax* (Restionaceae) and a note on the type of *Lyginia imberbis* (Anarthriaceae). *Telopea* 11: 53–58.
- Briggs BG & Johnson LAS (1998a) New genera and species of Australian Restionaceae (Poales). *Telopea* 7: 345–373.
- Briggs BG & Johnson LAS (1998b). New combinations arising from a new classification of non-African Restionaceae. *Telopea* 8: 21–31.
- Briggs BG & Johnson LAS (1999) A guide to a new classification of Restionaceae and allied families. Pp. 25–56 in Meney KA & Pate JS (eds) *Australian Rushes, Biology, Identification and Conservation of Restionaceae and allied families*. (University of Western Australia Press: Nedlands)
- Briggs BG & Johnson LAS (2000) Hopkinsiaceae and Lyginiaceae, two new families of Poales in Western Australia, with revisions of *Hopkinsia* and *Lyginia*. *Telopea* 8: 477–502.
- Briggs BG & Johnson LAS (2004) New combinations in *Chordilifex* (Restionaceae) from eastern Australia and new species from Western Australia. *Telopea* 10: 683–700.
- Briggs BG, Marchant AD, Gilmore S & Porter CL (2000). A molecular phylogeny of Restionaceae and allies. Pp. 661–671 in Wilson KL & Morrison D (eds.) *Monocots—Systematics and Evolution*. (CSIRO: Melbourne)
- Briggs BG, Marchant AD & Perkins AJ (in press) Phylogeny and features in Restionaceae, Centrolepidaceae and Anarthriaceae (restiid clade of Poales). Proceedings of 4th International Conference on Monocotyledons, Copenhagen 2008.
- Brown R (1810) *Prodromus Florae Novae Hollandiae et Insulae Van Diemen*. (J. Johnson: London)

- Brummitt RK (2005) Report of the Committee for Spermatophyta: 57. *Taxon* 54: 1093–1103.
- Burnett GT (1835) *Outlines of Botany*. (Henry Renshaw: London)
- Chanda S (1966) On the pollen morphology of the Centrolepidaceae, Restionaceae and Flagellariaceae, with special reference to taxonomy. *Grana Palynologica* 6: 355–415.
- Chanda S & Ferguson IK (1978) Pollen morphology of *Calorophus* and *Empodisma* (Restionaceae) and its taxonomic significance. *Kew Bulletin* 33: 411–415.
- Chanda S & Rowley J (1967) Apertural types in pollen of the Restionaceae and Flagellariaceae. *Grana Palynologica* 7: 16–36.
- Chase MW, Fay ME, Devey DS, Maurin O, Ronsted N, Davies TJ, Pillon Y, Petersen G, Seberg O, Tamura MN, Asmussen CB, Hilu K, Borsch T, Davis JI, Stevenson DW, Pires JC, Givnish TJ, Sytsma KJ, McPherson MA, Graham SW, & Rai HS (2006) Multi-gene analyses of monocot relationships: a summary. *Monocots: Comparative Biology and Evolution (excluding Poales)*. *Aliso* 22: 63–75.
- Columbus JT, Friar EA, Porter JM, Prince LM & Simpson MG (eds) (2006) *Monocots: Comparative Biology and Evolution (excluding Poales)*. *Aliso* 22. (Rancho Santa Ana Botanic Garden)
- Cooke, DA (1998) Centrolepidaceae. Pp. 106–109 in Kubitzki K (ed.) *The Families and Genera of Flowering Plants IV*. (Springer-Verlag: Berlin)
- Cutler DF (1969) Juncales. In Metcalfe CR (ed.) *Anatomy of the Monocotyledons vol. IV*. (Clarendon Press: Oxford)
- Cutler DF & Airy Shaw HK (1965) Anarthriaceae and Eceidicoleaceae: two new monocotyledonous families, separated from Restionaceae. *Kew Bulletin* 19: 489–499.
- Cutler DF (1972) Vicarious species of Restionaceae in Africa, Australia and South America. Pp. 73–83 in Valentine DH (ed.) *Taxonomy, phyto geography and evolution*. (Academic Press: London)
- Dahlgren RMT, Clifford HT & Yeo PF (1985) *The Families of the Monocotyledons*. (Springer-Verlag: Berlin)
- Eldenäs PK & Linder HP (2000). Congruence and complementarity of morphological and *trnL-trnF* sequence data and the phylogeny of the African Restionaceae. *Systematic Botany* 25: 692–707.
- Endlicher SL (1836) *Genera Plantarum*. (Beck: Vienna)
- Gilg-Benedict C (1930) Restionaceae. Pp. 8–27 in Engler A & Prantl K (eds) *Die Natürlichen Pflanzenfamilien* 15a. (Engelmann: Leipzig)
- Hamann U (1962) Beitrag zur Embryologie der Centrolepidaceen mit Bemerkungen über den Bau der Blüten und Blütenstände und die systematische Stellung der Familie. *Berichten der Deutschen Gesellschaft* 75: 153–171.
- Hamann U (1975) Neue Untersuchungen zur Embryologie und Systematik der Centrolepidaceen. *Botanische Jahrbucher für Systematik* 7: 319–330.
- Harborne JB (1979) Correlations between flavonoid chemistry, anatomy and geography in the Restionaceae. *Phytochemistry* 18: 1323–1327.
- Harborne JB (2000) Arsenal for survival: secondary plant products. *Taxon* 49: 435–449.
- Harborne JB, Williams CA, Briggs BG & Johnson LAS (2000) Flavonoid patterns and the phylogeny of the Restionaceae. Pp. 672–675 in Wilson KL & Morrison D (eds) *Monocots—Systematics and Evolution*. (CSIRO: Melbourne)
- Hardy CR & Linder HP (2005) Intraspecific variability and timing in ancestral ecology reconstruction: a test case from the Cape flora. *Systematic Biology* 54: 299–316.
- Hardy CR & Linder HP (2007) Phylogeny and historical ecology of *Rhodocoma* (Restionaceae) from the Cape floristic region. *Monocots: Comparative Biology and Evolution (Poales)*. *Aliso* 23: 213–226.
- Hardy CR, Moline P & Linder HP (2008) A phylogeny for the African Restionaceae and new perspectives on morphology's role in generating complete species phylogenies for large clades. *International Journal of Plant Sciences* 169: 377–390.

- Jiang S, Soltis PS, Gitzendanner MA, Moore MJ, Li R, Hendry TA, Qui Y-L, Dhingra A, Bell CD & Soltis DE (2008) Resolving an ancient, rapid radiation in Saxifragales. *Systematic Biology* 57: 38–57.
- Johnson LAS & Briggs BG (1981) Three old southern families – Myrtaceae, Proteaceae and Restionaceae. Pp. 427–464 in Keast A (ed.) *Ecological Biogeography of Australia*. (W. Junk: The Hague)
- Kellogg EA & Linder HP (1995) Phylogeny of Poales. Pp. 511–542 in Rudall PJ, Cribb PJ, Cutler DF & Humphries CJ. (eds) *Monocotyledons: Systematics and Evolution*. (Royal Botanic Gardens: Kew)
- Ladd PG (1977) Pollen morphology of some members of the Restionaceae and related families, with notes on the fossil record. *Grana* 16: 1–14.
- Linder HP (1984) A phylogenetic classification of the genera of the African Restionaceae. *Bothalia* 15: 11–76.
- Linder HP (1985) Conspectus of the African species of Restionaceae. *Bothalia* 15: 387–503.
- Linder HP (1991a) Confidence limits in phylogenies: an example from the African Restionaceae. *Taxon* 40, 253–266.
- Linder HP (1991b) A review of the southern African Restionaceae. *Contributions from the Bolus Herbarium* 13: 209–264.
- Linder HP (1992a) The gynoecia of Australian Restionaceae: morphology, anatomy and systematic implications. *Australian Systematic Botany* 5: 227–245.
- Linder HP (1992b) The structure and evolution of the female flower of the African Restionaceae. *Botanical Journal of the Linnean Society* 109: 401–425.
- Linder HP (2000) Vicariance, climate change, anatomy and phylogeny of Restionaceae. *Botanical Journal of the Linnean Society* 134: 159–177.
- Linder HP, Briggs BG & Johnson LAS (1998) Restionaceae. Pp. 425–445 in Kubitzki K (ed.) *The Families and Genera of Flowering Plants IV*. (Springer-Verlag: Berlin)
- Linder HP, Briggs BG & Johnson LAS (2000) Restionaceae—a morphological phylogeny. Pp. 653–660 in Wilson KL & Morrison D (eds) *Monocots—Systematics and Evolution* (CSIRO: Melbourne)
- Linder HP & Caddick LR (2001) Restionaceae seedlings: morphology, anatomy and systematic implications. *Feddes Repertorium* 112: 59–80.
- Linder HP, Eldenäs P & Briggs BG (2003) Contrasting patterns of radiation in African and Australian Restionaceae. *Evolution* 57: 2688–2702.
- Linder HP & Ferguson IK (1985) On the pollen morphology and phylogeny of the Restionales and Poales. *Grana* 24: 65–76.
- Linder HP & Hardy CR (2005) Species richness in the Cape flora: a macroevolutionary and macroecological perspective. Pp. 47–73 in Bakker FT, Chatrou LW, Gravendeel B & Pelsers PB (eds) *Plant Species-level Systematics: New Perspectives on Pattern and Process*. *Regnum Vegetabile* 143.
- Linder HP, Hardy CR & Rutschmann F (2005) Taxon sampling effects in molecular clock dating: an example from the African Restionaceae. *Molecular Phylogenetics and Evolution* 35: 569–582.
- Linder HP & Mann DM (1998) The phylogeny and biogeography of *Thamnochortus* (Restionaceae). *Botanical Journal of the Linnean Society* 128: 319–357.
- Linder HP & Rudall, PJ (1993) The megagametophyte in *Anarthria* (Anarthriaceae, Poales) and its implications for the phylogeny of the Poales. *American Journal of Botany* 80: 1455–1464.
- Lindley J (1836) *A Natural System of Botany*, edition 2. (Longman: London)
- McNeill J, Barrie FR, Burdet HM, Demoulin V, Hawksworth DL, Marhold K, Nicolson DH, Prado J, Silva PC, Skog JE, Wiersema JH & Turland NJ (2006) *International Code of Botanical Nomenclature*. (Koeltz: Koenigstein)
- McNeill J, Stuessy TF, Turland NJ & Hörandl E (2005) XVII International Botanical Congress: preliminary mail vote and report of Congress action on nomenclature proposals. *Taxon* 54: 1057–1064.

- McVaugh R (1968) Report of the Committee for Spermatophyta. Conservation of generic names VIII. *Taxon* 17: 85–87.
- Marchant AD and Briggs BG (2007) Ecdiocolleaceae and Joinvilleaceae, sisters of Poaceae (Poales): evidence from *rbcL* and *matK* data. *Telopea* 11: 437–450.
- Masters MT (1878) Restiaceae. Pp. 218–398 in de Candolle A & C *Monograph Phanerogamarum*, vol. 1. (Masson: Paris)
- Meney KA & Pate JS (eds) (1999) *Australian Rushes, Biology, Identification and Conservation of Restionaceae and allied families*. (University of Western Australia Press: Nedlands)
- Meney KA, Pate JS & Hickman EJ (1999) Morphological and anatomical descriptions of Restionaceae and allied families and their distribution. Pp. 161–461 in Meney KA. & Pate JS (eds) *Australian Rushes, Biology, Identification and Conservation of Restionaceae and allied families*. (University of Western Australia Press: Nedlands)
- Moline PM & Linder HP (2005) Molecular phylogeny and generic delimitation in the *Elegia* group (Restionaceae, South Africa) based on a complete taxon sampling and four chloroplast DNA regions. *Systematic Botany* 30: 759–772.
- Nees von Esenbeck CG (1830) Beitrag zur Kenntniss der Familien der Restiaceen in Rücksicht auf Gattungen und Arten. *Linnaea* 5: 627–666.
- Nees von Esenbeck CG (1846) Restiaceae. Pp. 56–68 in C. Lehmann (ed.) *Plantae Preissianae, sive Emmerato Plantarum quas in Australasia occidentali et meridionali-occidentali Annis 1838–1841 collegit Ludovicus Preiss*, vol. 2. (Meissner: Hamburg)
- Pate JS & Delfs JC (1999) Anatomical features of Restionaceae and allied families. Pp. 57–70 in Meney KA & Pate JS (eds) *Australian Rushes, Biology, Identification and Conservation of Restionaceae and allied families*. (University of Western Australia Press: Nedlands)
- Pillans NS (1928) The African genera and species of Restionaceae. *Transactions of the Royal Society of South Africa* 16: 207–439.
- Prakash N (1969) The floral development and embryology of *Centrolepis fascicularis*. *Phytomorphology* 19: 285–291.
- Prychid CJ, Rudall PJ & Gregory M (2003) Systematics and biology of silica bodies in monocotyledons. *Botanical Review* 69: 377–440.
- Reveal JL (2007) *Indices Nominum Supragenericorum Plantarum Vascularum*. University of Maryland Web Page. <http://www.plantsystematics.org/reveal/pbio/fam/inspvindex.html> Accessed 3 March 2009.
- Ronse Decraene LP, Linder HP & Smets EF (2001) Floral ontogenetic evidence in support of the *Willdenowia* clade of South African Restionaceae. *Journal of Plant Research* 114: 329–342.
- Rudall PJ & Linder HP (1988) Megagametophyte and nucellus in Restionaceae and Flagellariaceae. *American Journal of Botany* 75: 1777–1786.
- Sokoloff D, Remizowa M, Linder HP & Rudall PJ (in press) Developmental morphology of reproductive structures in Centrolepidaceae: in search of flowers. Proceedings of 4th International Conference on Monocotyledons, Copenhagen 2008.
- Williams CA, Harborne JB, Greenham J, Briggs BG & Johnson LAS (1998) Flavonoid patterns and the revised classification of Australian Restionaceae. *Phytochemistry* 49: 529–552.